

NEW REAR HOLD DOWN LINK ASSEMBLY

CATEGORY: Mandatory At Next Maintenance

SUMMARY: CarnaudMetalbox Engineering have developed a new rear hold down link, in order to offer an improved consistency of can wall thickness variation.

The new development ensures less wear in the link due to a more durable design. This results in less backlash in the front piston, and hence the redraw area, enabling this improved consistency. This feature also offers the ability to change just the proprietary bearings upon reconditioning, rather than the need to change the entire unit.

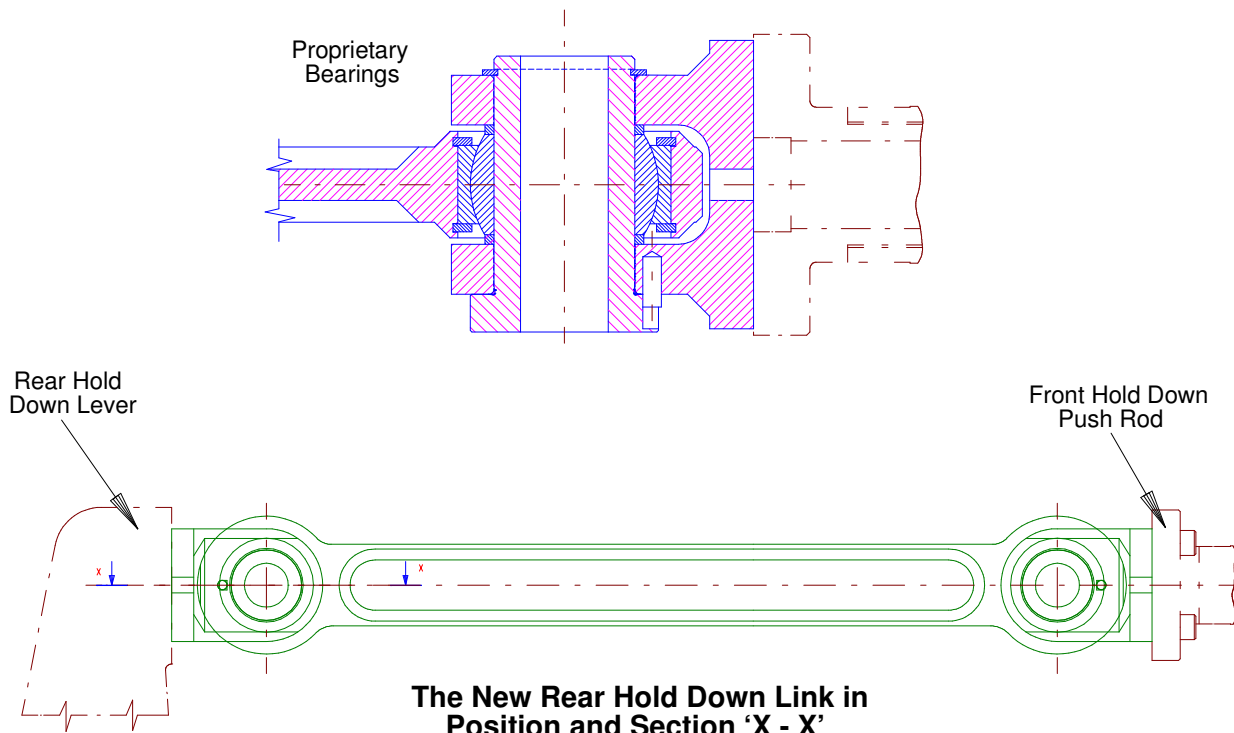
The new rear hold down link is applicable to 5000 Bodymakers, and was fitted as standard from serial number 174S. The development is

available in the easy to fit form of a retrofit package, enabling a total fitting time of about three hours (plus two hours to re-set the machine).

NOTE: Also refer to **TB5000-023**

For further information about the new rear hold down link, please contact either of the references at CarnaudMetalbox Engineering detailed below, quoting the technical bulletin number **TB5000-008**.

Note: A complete Library of Technical Bulletins is accessible on the Company Web Site.



CarnaudMetalbox Engineering Plc,
Dockfield Road, Shipley,
West Yorkshire, BD17 7AY, UK
Tel: +44 1274 846200, Fax: +44 1274 846201
email: sales@CMBEcanmaking.com

CarnaudMetalbox Engineering Plc,
79 Rockland Road, Norwalk,
Connecticut 06854, USA
Tel: +1 203 853 7325, Fax: +1 203 866 7627
email: sales@CMBEcanmaking.com