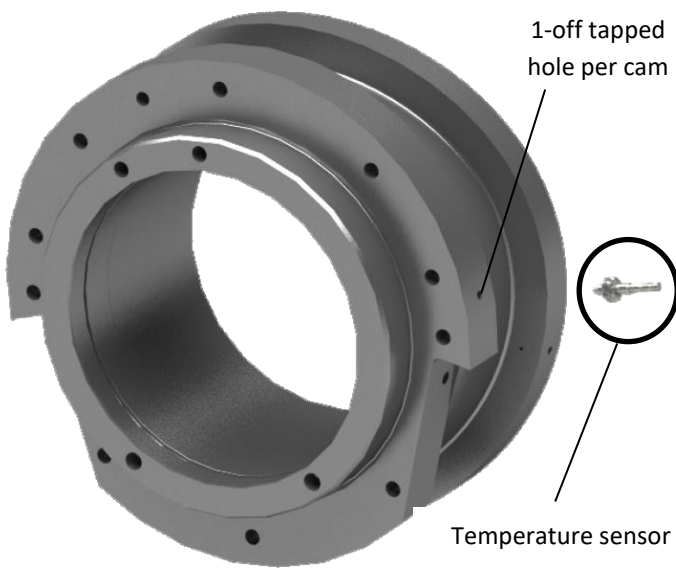


**Category:** Recommended at next maintenance

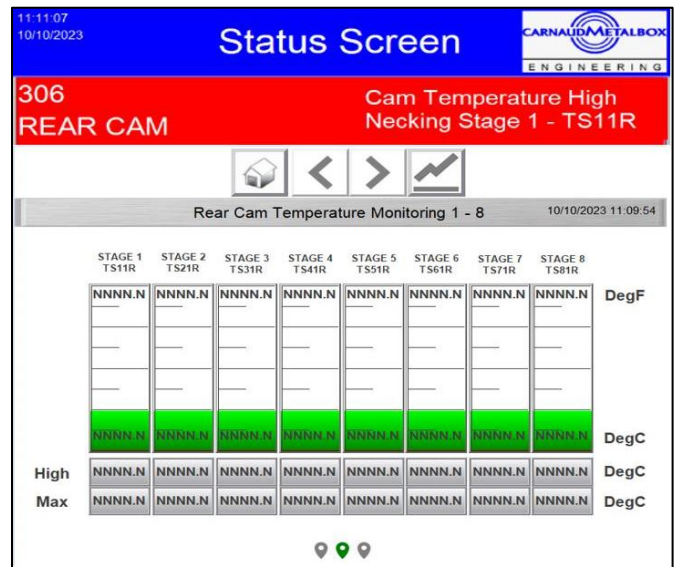
CarnaudMetalbox Engineering Ltd (CMbE) recommends that the Die Necker Pusher ram and/or Knockout ram cam followers are replaced every 12 months as part of a preventative maintenance program. However, unexpected failure of a cam follower can occur between maintenance periods, causing damage to the pusher cam and/or knockout cam, which can result in expensive downtime to repair or replace.

To prevent cam follower failure, CMbE have introduced a **cam temperature monitoring kit**. The cam temperature monitoring kit continuously monitors the temperature of the cams, equipped with software that is able to register unusually high temperature readings associated with a failing cam follower, and alert machine operators to the potential issue before any damage arises on the cam surface.

The kit is supplied with all componentry necessary to equip all the knockout and/or pusher cams on a Die Necker. Fitting the sensors requires each cam to be modified with a tapped hole (**Fig. 1**), and the upgrade (including revised PLC & HMI software) can be completed within 1-2 days, depending on machine configuration.



**Fig. 1**  
Knockout Cam



**Fig. 2**  
HMI Temperature Monitoring Screen

CMbE recommends that customers contact the CMbE Sales Department detailed below to discuss the cam temperature monitoring kit tailored to their specific requirements.

For further information regarding this Technical Bulletin, please contact either of the contacts below quoting Technical Bulletin number **TB3400-042** and your machine Serial Number. A complete library of Technical Bulletins is available on the company web site.