



ENGINEERING

# Technical Bulletin

**TB5000-057**

Sheet: 1 of 1

5000 Bodymaker

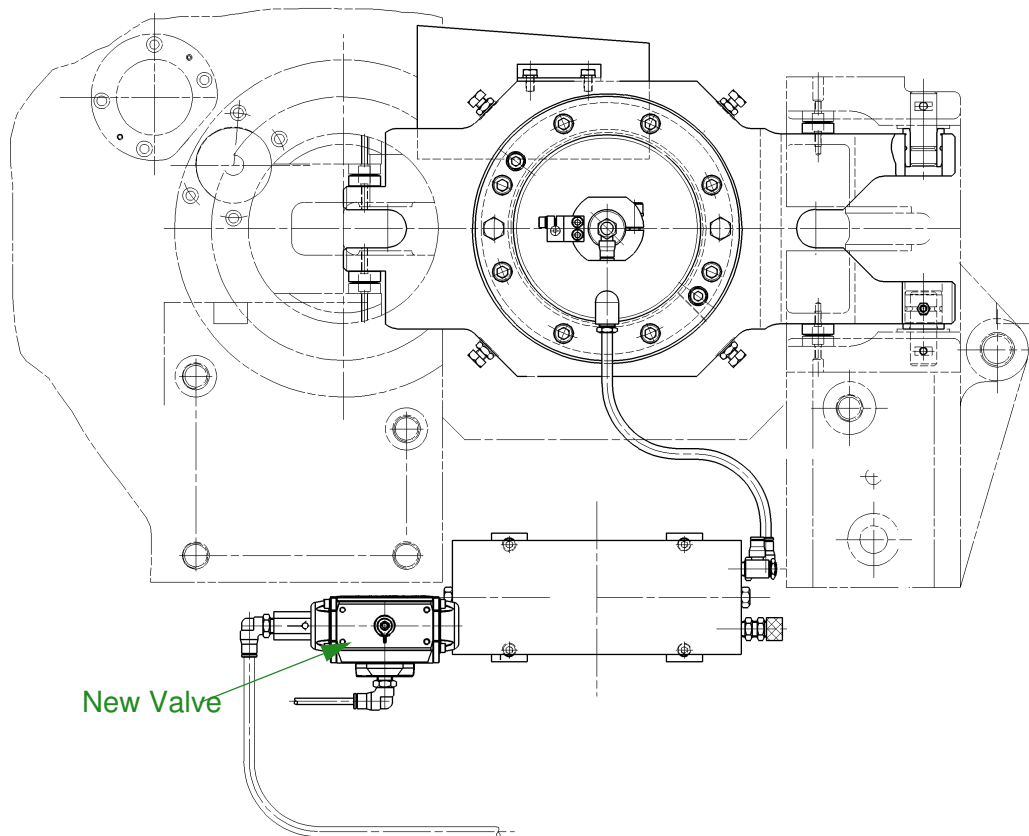
Issue: 18.12. 09

## Auto Drain Valve - Microdome

**CATEGORY:** Advised at Next Maintenance

Summary: CarnaudMetalbox Engineering have after working closely with various customers introduced an auto Air-Purge Solenoid Valve.  
This new valve replaces the existing Drip Drain leg.

Trapped coolant within the reservoir tank can lead to split Domes due to pressure build-up.  
The new valve is pneumatically operated and will open each time the Front Guard Door is opened, exhausting the coolant into the guard sump.



For further information regarding this Technical Bulletin please contact either of the contacts below quoting Technical Bulletin Number **TB5000-057** and your machine Serial Number

Note: a complete Library of Technical Bulletins is accessible on the Company Web Site.

CarnaudMetalbox Engineering Plc,  
Dockfield Road, Shipley,  
West Yorkshire, BD17 7AY, UK  
Tel: +44 1274 846200, Fax: +44 1274 846201  
email: [sales@CMBEcanmaking.com](mailto:sales@CMBEcanmaking.com)

CarnaudMetalbox Engineering Plc,  
79 Rockland Road, Norwalk,  
Connecticut 06854, USA  
Tel: +1 203 853 7325, Fax: + 1 203 866 7627  
email: [sales@CMBEcanmaking.com](mailto:sales@CMBEcanmaking.com)