

Main drive Gearbox Enhancement Machine Serial Numbers 002s - 007s

CATEGORY: Recommended

Summary: For improved gearbox service life
CarnaudMetalbox Engineering recommends the fitment of force ventilation kit to the motor drive assembly. See Fig. 1

Recommended Action For Customers

Mechanical Instructions

1. Cut an aperture in the drive cover (Drawing Number 4050958F Details) See Fig. 2
2. Replace existing motor drive belt tensioner with belt tensioner assembly (Part Number 4051897C/ Parts List 3402-104/03) See Fig. 3
3. Fit fan assembly (Drawing Number 4051565D/ Parts list 3402-125/01 See Below



Fig. 1

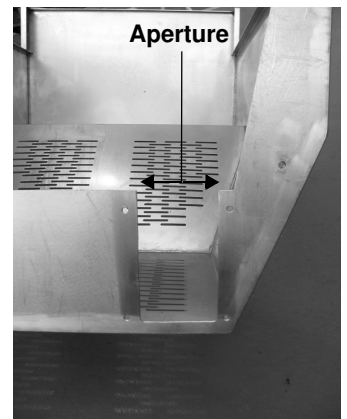
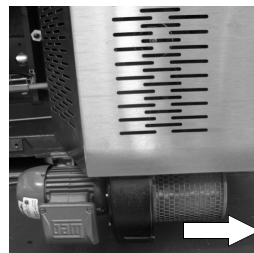


Fig. 2

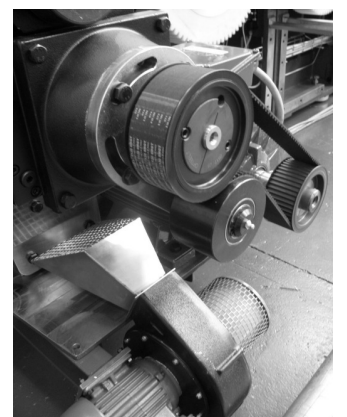
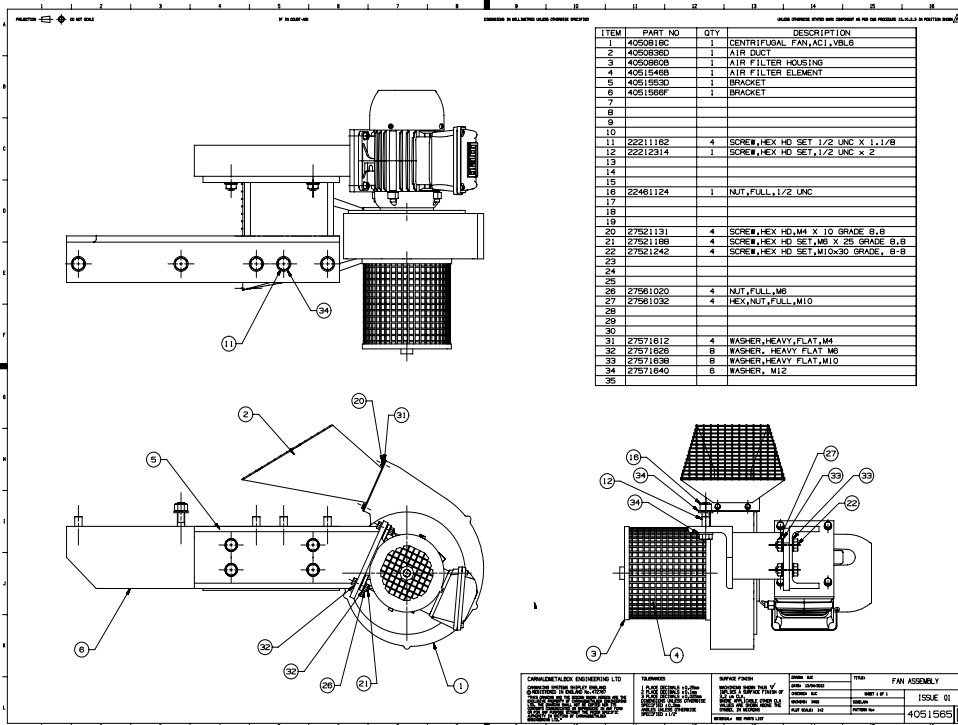


Fig. 3

CarnaudMetalbox Engineering Limited,
Dockfield Road, Shipley,
West Yorkshire, BD17 7AY, UK
Tel: +44 1274 846200, Fax: +44 1274 846201
email: sales@CMBEcanmaking.com

CarnaudMetalbox Engineering Limited,
79 Rockland Road, Norwalk,
Connecticut 06854, USA
Tel: +1 203 853 7325, Fax: +1 203 866 7627
email: sales@CMBEcanmaking.com



ENGINEERING

Technical Bulletin

TB3400-014

Sheet: 2 of 2

3400 Neck Forming System

Issue: 14. 12. 2012

Main drive Gearbox Enhancement Machine Serial Numbers 002s - 007s

Electrical Instructions

Recommended Action For Customers

Contact CarnaudMetalbox Engineering for site specific electrical information. Electrical drawings will be modified accordingly.

For further information regarding this Technical Bulletin please contact either of the contacts below quoting Technical Bulletin Number **TB3400-014** and your machine Serial Number

Note: a complete Library of Technical Bulletins is accessible on the Company Web Site.

CarnaudMetalbox Engineering Limited,
Dockfield Road, Shipley,
West Yorkshire, BD17 7AY, UK
Tel: +44 1274 846200, Fax: +44 1274 846201
email: sales@CMBEcanmaking.com

CarnaudMetalbox Engineering Limited,
79 Rockland Road, Norwalk,
Connecticut 06854, USA
Tel: +1 203 853 7325, Fax: + 1 203 866 7627
email: sales@CMBEcanmaking.com