

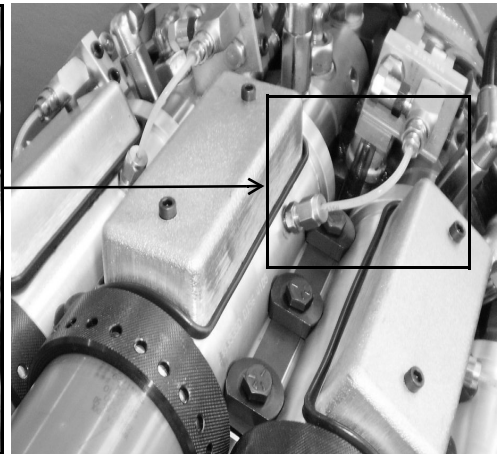
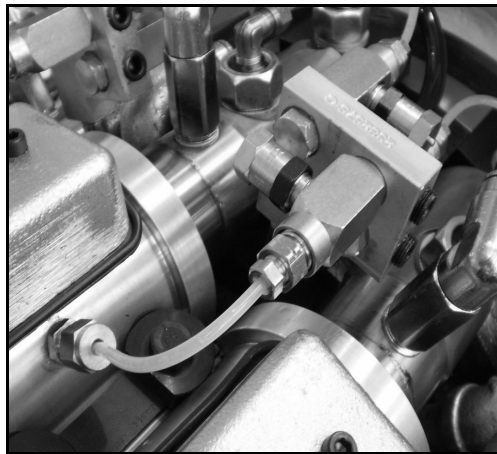
Improvements To Lubrication Fittings

CATEGORY: Recommended (For Machine Serial No's 001 - 020 only)

Summary: Improved Ferrule for Knockout Ram, IBR Pusher Ram and IBR Reform Tooling Front Cam Follower Nylon Lubrication Tubes. Excessive tightening of the nut on the nylon lubrication tubes listed above could cause excessive deformation of the Ferrule. This could result in an obstruction to the lubrication being delivered which would in turn have a detrimental effect on the components being lubricated.

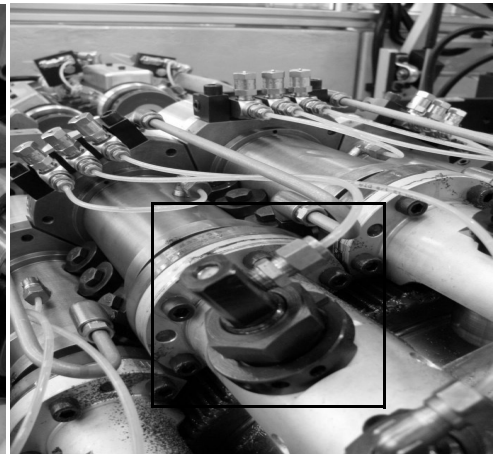
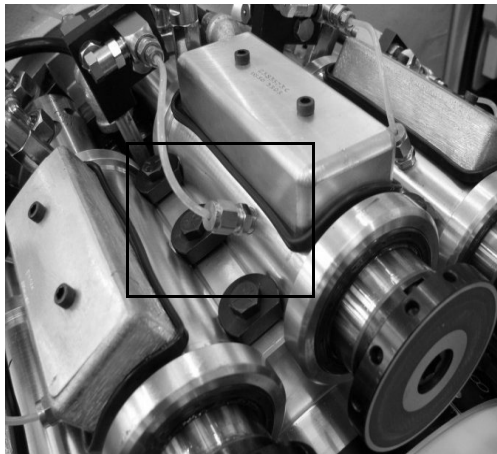
Recommended Action - Knockout Ram

A replacement tube (Assy No. 2399702B. See sheet 2) is available from CarnaudMetalbox Engineering. One tube assembly is required for each Knockout Ram on the 3400 Necker. The tube assembly includes all nuts and ferrules for both ends and requires no further components. A minimal disassembly of the existing tube assembly is required before fitting the new tube assembly.



Recommended Action - IBR Pusher Ram and IBR Reform Tooling Front Cam Follower

A replacement ferrule (Part No. 23242150) is available from CarnaudMetalbox Engineering. 24 ferrules are required only if the Necker has an IBR stage. (See Areas Indicated Opposite)



Note: Care should be taken to tighten the nut to finger tightness plus three - quarters to one full turn of the nut.

Alternative Action

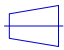

When tightening the nut on an existing tube assembly be sure to stop tightening the nut at finger tightness plus half to three - quarters of a turn. Over tightening the nut could lead to the significant damage described above.

For further information regarding this Technical Bulletin please contact either of the contacts below quoting Technical Bulletin No. TB3400-008

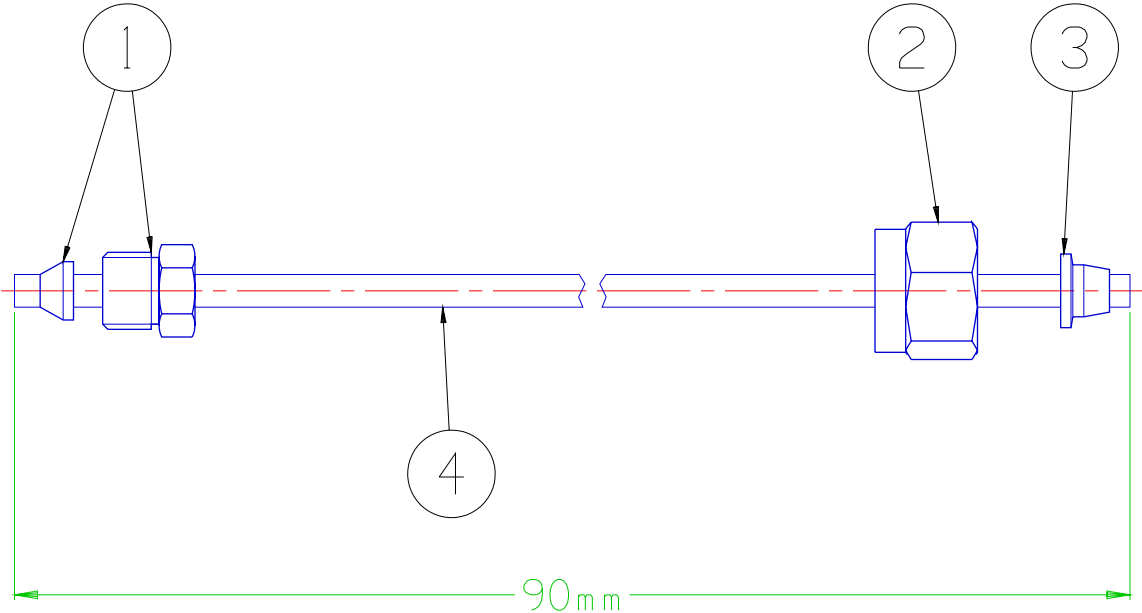
Note: a complete library of Technical Bulletins is accessible on the Company Web Site.

CarnaudMetalbox Engineering Limited,
Dockfield Road, Shipley,
West Yorkshire, BD17 7AY, UK
Tel: +44 1274 846200, Fax: +44 1274 846201
[email: sales@CMBEcanmaking.com](mailto:sales@CMBEcanmaking.com)


CarnaudMetalbox Engineering Limited,
79 Rockland Road, Norwalk,
Connecticut 06854, USA
Tel: +1 203 853 7325, Fax: +1 203 866 7627
[email:sales@CMBEcanmaking.com](mailto:sales@CMBEcanmaking.com)

2399702		PROJECTION  IF IN DOUBT-ASK 		ITEM	PART No.	QTY	DESCRIPTION
Sheet	1	of	1	1	23241618	1	SLEEVE AND NUT, LINCOLN 83924
				2	23241215	1	NUT, TUBING, WADE WUN1000
				3	23242150	1	SLEEVE, TUBING, UNIVERSAL, WADE WUR1020
				4	16218251	0.1	TUBE, NYLON, NORGREN, 1/8 NATURAL PA0051050C
				5			
				6			

Sheet 1 of 1 Sheets



DESIGN ISSUE 51

				CornaudMetalbox Engineering plc <small>*This drawing and the design shown hereon are the exclusive property of CornaudMetalbox Engineering plc. The drawing shall not be copied nor its contents communicated or reproduced in any form or for any purpose without the prior specific authority in writing of CornaudMetalbox Engineering plc.*</small> © Registered in England No.472767		Drawn NAS Date 01/09/2010 Checked NAS Machine 3400										Issue Microfilmed			
				Tolerances Dimensions to one decimal place (0.0) ±0.25mm Dimensions to two decimal places (0.00) ±0.1mm Dimensions to three decimal places (0.000) ±0.025mm All other dimensions ±0.5mm unless stated		Surface Finish Machining shown thus  implies a surface finish of 3.2 µm CLA. Where applicable other CLA values are shown above the symbol in microns.		Title Replacement Tube Assembly										Plot Scale Sheet 1 of 1 Sheets	
Alt. No. Date Grid Alteration Mod. Note				Material Existing Canmaking Systems Shipley England		Pattn.No. 2399702										B			